



ANNUAL REPORT

2081/82 (2024/25)



Wildlife Conservation and Research Endeavour Nepal



www.wildcare.org.np

+977-9766383035



info@wildcare.org.np

Pulchowk, Lalitpur, Nepal



Annual Report 2081/82 (2024/25)

Wildlife Conservation and Research Endeavour (WILD CARE) Nepal

Copyright © 2025, WILD CARE Nepal. All rights reserved.

Published by:

Wildlife Conservation and Research Endeavour (WILD CARE) Nepal

Shree Durbar Tole, Pulchowk, Lalitpur-03, Nepal

P.O. Box 139, District Post Office (3080203) Lalitpur, Nepal

Email: info@wildcare.org.np

Website: www.wildcare.org.np

Contact: +977-9766383035

Cover photos: Artwork of selected cats of Nepal by Anija Singh (front) and participants of wild cats series 2025 at Triveni by Subash A. Bastakoti (back).

Table of Contents

01	<i>Message from the President</i>	
02	<i>About the organization</i>	p 01
03	<i>081/82 at a glance</i>	p 02
04	<i>Activities</i>	p 03
05	<i>Capacity-building programs</i>	p 07
06	<i>Collaborations and support</i>	p 08
07	<i>Success stories</i>	p 11
08	<i>Partnership</i>	p 13
09	<i>Publications</i>	p 14
10	<i>Media coverage</i>	p 15
11	<i>Conservation materials</i>	p 16
12	<i>Multimedia</i>	p 18
13	<i>Acknowledgements</i>	p 19
14	<i>Financial summary</i>	p 20

Message from the President



Dear Friends, partners and supporters,

It gives me great pleasure to share with you the Annual Report of Wildlife Conservation and Research Endeavour (WILD CARE) Nepal for the fiscal year 2081/82. As a young organization, this year has been about learning, building partnerships, and establishing ourselves in Nepal's biodiversity conservation arena. With the dedication of our team and the trust of our supporters, we have been able to make meaningful contributions to wildlife conservation and community empowerment in Nepal.

We advanced research and conservation of some neglected yet threatened species in Nepal, including salamanders, freshwater turtles and tortoises, and sloth bears. We also extended our long-term work on fishing cats to new locations, where we continue to combine field research with conservation interventions to secure their future. Alongside research, we worked to raise awareness through information boards, conservation posters, and radio jingles, ensuring that conservation messages reached local communities in engaging and lasting ways. Equally important, we supported students and early-career researchers through guidance, training, and conservation grants.

The year also brought transitions within our team. We bid farewell to two of our co-founders as they left for higher studies abroad. At the same time, we welcomed two new members as our first batch of interns. Looking ahead, we aim to strengthen our programs, involve more youth in conservation, and continue working closely with communities and partners.

I express my gratitude to our donors, partners, and local communities for trusting and supporting us. I am equally grateful to our dedicated team, whose hard work and commitment have brought us this far.

Rama Mishra, PhD
President

About the organization

Wildlife Conservation and Research Endeavour, Nepal (WILD CARE) is a non-profit organization committed to nature and biodiversity conservation in Nepal. It was founded through a synergy of highly motivated individuals who were previously working independently on various species research and conservation. We aim to effectively address the pressing need for biodiversity conservation through research, conservation initiatives and collaborative efforts. WILD CARE is officially registered under the Government of Nepal (Regd. no. 316063; PAN: 619738912) and Social Welfare Council (Regd. no. 55749).

Mission

To safeguard Nepal's rich biodiversity with a harmony between wildlife and humans.

Thematic areas

1. Species conservation
2. Advance conservation through research
3. Forge cross-sectoral collaboration
4. Empower younger generation
5. Promote inclusivity and diversity in conservation
6. Enhance climate resilience

Working Approach



01

Species Research and Conservation

- Field based research
- Conservation activities



02

Education and Empowerment

- Grants
- Trainings
- Internship
- Short-term contracts



03

Community and Livelihood

- Green entrepreneurship
- Alternative livelihood to reduce HWC

081/82 at a Glance



150+

school and community outreach programs implemented successfully



9000+

individuals successfully reached across 20 districts

Information, Education and Communication Tools (IEC-Tools)

5 merchandise items produced

2 new conservation poster launched

4 information board installed

6 road signs placed

1 radio jingle created

Milestones

3
new projects approved

1
new partnership established

Community Support

3 wetland species conservation grant disbursed

2 conservation programs supported

25 chicken coops provided

Capacity-building

30+ youth volunteers engaged

8 citizen-scientist trained

2 students mentored

Activities

Status Assessment and Conservation of Elongated Tortoise in Southeastern Nepal

WILD CARE implemented a comprehensive conservation program and habitat surveys for the Elongated Tortoise in Jhapa district, Southeastern Nepal, between August 2024 and July 2025. The study identified consumption, hunting, and illicit collection as major threats to the species' survival within the project sites. In response, conservation interventions were introduced to mitigate these threats, focusing on education and awareness campaigns, stakeholder consultations, and community outreach programs.



Empowering Communities for Sloth Bear Conservation in East Nepal's Churia Hills

Impact Overview

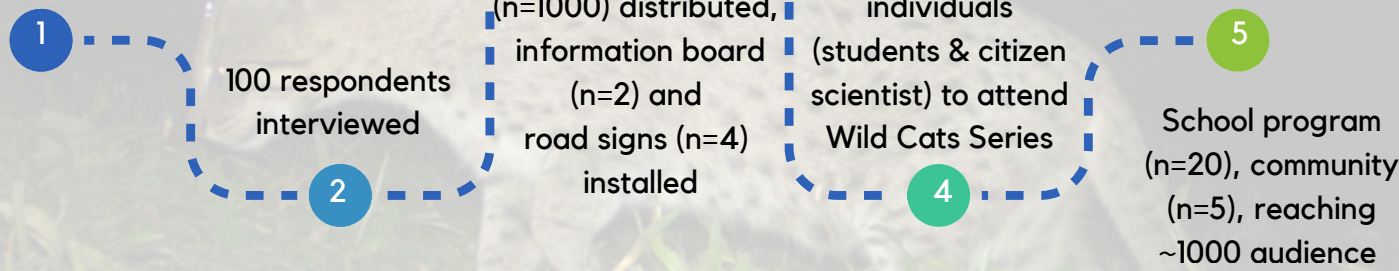
- 🏫 816 students reached across 8 schools
- 🌿 6 community outreach events with 168 participants
- 👥 3 workshops with 10 CFUGs, engaging 31 representatives
- 👁️ 4 local people trained for community-led monitoring

"Sloth bears in Trijuga Forest are at high risk from hunting, habitat disturbance, and fragmentation. This area is one of the few important habitats for sloth bears protected areas in Nepal. Immediate conservation actions and community stewardship are vital to prevent further losses and ensure their long-term survival."



Status Survey and Conservation of Fishing Cat in Parasi District, Nepal

150 nights camera traps in eight potential locations



Information Sharing and Stakeholders Interaction

Dr. Rama Mishra shared her PhD research findings on fishing cats with local stakeholders at an event organized by WILD CARE Nepal. Her study used cutting-edge technologies such as GPS satellite collaring and DNA metabarcoding to estimate the home range and diet of fishing cats in Nepal.



60+

stakeholders including government officials, buffer zone committee, non-profit organizations, youth clubs, reporters, nature guides, hoteliers, home stays, fish farmers and local community members



Capacity-building programs

December 2024

Eleven undergraduate students attended a one-day training of trainers (ToT) sessions on conservation outreach. The aim of this training was to build the capacity of these students as conservation leaders where they gained in-depth knowledge about tortoise biology, conservation status, and the urgent need for conservation attention towards this species. These participants furthered apply their learning to spread conservation messages through school-based education programs in their respective areas.



February 2025

18 participants, including 14 university-level students from diverse academic backgrounds and four local citizen scientists attended 3 days in-house training for wild cats conservation at Triveni, Nawalparasi. This program, popularly known as **Wild Cats Series** is an annual initiative hosted by WILD CARE Nepal. This year marked the third edition of the series. Since its inception, the program has helped build a network of 50 volunteers across 20 districts of Nepal, who are now conservation preachers in their respective local communities.



Full report of Wild Cats Series can be retrieved from this link:

https://drive.google.com/file/d/1Yvq89PMVS8ml9fFcaGrZINnu2yAUMvIO/view?usp=drive_link

Collaborations and support

Beyond our own programs, the organization also collaborated with other conservation communities, providing support that aligns with shared conservation priorities.

1. Wetland Species Conservation Outreach Grant

We launched a new funding scheme to support individuals or groups working to conserve wetland species. The grant encourages impactful, creative, and locally driven initiatives that raise awareness and promote conservation of wetland species in their natural habitats. We called for three grants (each worth Nrs. 10,000) for this year.

www.wildcare.org.np wildcare.np@gmail.com

WILDCARE WINNER

WETLAND SPECIES CONSERVATION OUTREACH GRANT 2025

Conserving Endemic Wetland Groundhoppers: Awareness Campaign for *Skejotettix netrajyoti* and *Aryalidonta itishreea* in Ghyalchok, Gorkha, Nepal
Madan Subedi, Urmila Adhikari, Sushila Chaudhary, Abiral Lamichhane [Agriculture Science Center, Ghyalchok, Gorkha]

Protecting the Asian Woolly-necked Stork: Raising Awareness on Habitat loss, Threats and Conservation importance
Dinesh Ramjali, Prabhat Chaudhary, Kamal Raj Budha, Prashant Gautam [Save the Stork - Surkhet - Karnali]

Outreach Initiatives for Fishing Cat Conservation Around Koshi Tappu Wildlife Reserve
Rohan Tuladhar, Shivaraj Limbu and RAH team [Research Association Hattisar (RAH)]



घ्याल्चोक, गोरखाका रैथाने भुइँफड्के प्रजाति संरक्षण सम्बन्धी सचेतना अभियान

स्थान: श्री नेत्रज्योति आधारभूत विद्यालय, गण्डकी गा.पा.-०७, घ्याल्चोक, गोरखा
 मिति: २०८१ माघ २४ गते, विहीबार
 समय: दिउँसो १ वजे

आयोजक: कृषि विज्ञान केन्द्र, घ्याल्चोक
 सहयोगी संस्था: Wildlife Conservation and Research Endeavour, Nepal

WILDCARE

2. Nepal Owl Festival 2025

WILD CARE participated in Nepal Owl Festival 2025 to share its ongoing works and connect with wider conservation community.



3. National Wildlife Week

We provided financial and resource support to five green organizations based at Institute of Forestry, Pokhara on the occasion of National Wildlife Week. One hoarding board on conservation of wild cats of Nepal was installed at Tangting area of Annapurna Conservation Area through this initiative.



SHEAC, SOWREC, SAFE-Nepal jointly organized another event at Pokhara marking National Wildlife Week 2082.



4. Plantation and cleanliness program at Lumbini

WILD CARE was a part of plantation and cleanliness program at Lumbini organized on the occasion of World Environment Day 2025.



5. Plantation and awareness program at Udayapur

We supported two volunteers to conduct plantation and awareness program at Udayapur district on the occasion of World Environment Day 2025.



Success stories

Since 2023, we have distributed 25 chicken coops to economically disadvantaged households in the buffer zone of Koshi Tappu Wildlife Reserve. This initiative aimed to strengthen local livelihood and develop conservation stewardship for fishing cats in the region.

In June 2025, we carried out a follow-up survey to assess the results of this effort. The findings were encouraging. On average, families reported annual earnings of NPR 80,000–100,000 from poultry rearing. This income has supported their basic household needs and helped reduce financial stress.

"Our family is very happy to receive this predator-proof chicken coop. I never thought we would get something like this free of cost. We are very thankful for it. We are able to earn an income by selling chickens, and we can also serve guests. The income has helped us buy stationery for our school-going children."



Sita Chaulagain
Prakashpur,
KTWR, BZ





 Jalthal Forest (n=2), Mahamai Municipality, Ilam (n=1)

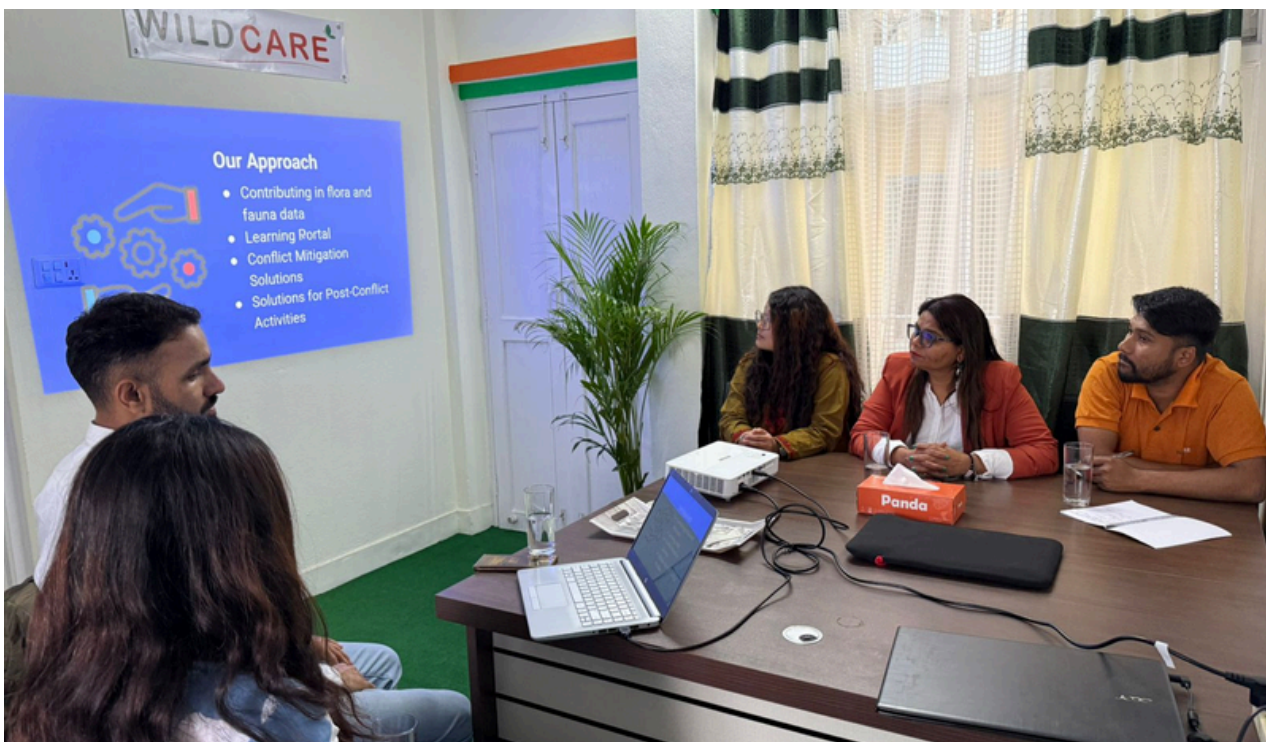
Continued intervention led to the rescue of three Elongated tortoise !!

Our continuous engagement with community forests and local people in Jhapa district led to the rescue of three elongated tortoises. With support from The Rufford Foundation, we ran a one-year conservation project during which multiple field surveys and interventions were carried out to raise awareness about tortoise conservation.

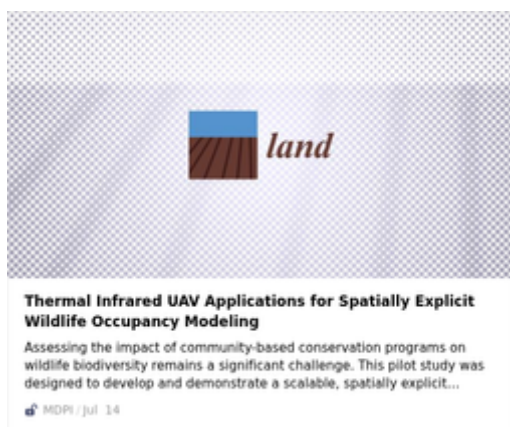
All three tortoises had been caught from the wild and were being kept as pets. They were transferred to the Turtle Rescue and Conservation Centre (TRCC) for proper care. One of the rescued female was gravid and laid eggs later at the centre.

Partnerships

WILD CARE Nepal signed a Memorandum of Understanding (MoU) with Salyani Technologies Pvt. Ltd. to leverage technology for impactful conservation and sustainable future. This partnership is aimed to integrate innovative technologies into wildlife research, monitoring, and conservation practices.



Publications



Thermal Infrared UAV Applications for Spatially Explicit Wildlife Occupancy Modeling.



More than fish: diet composition of fishing cats *Prionailurus viverrinus* in human-dominated landscape.



Cats in farms: Ranging behavior of the fishing cat (*Prionailurus viverrinus*) in a human-dominated landscape



Navigating human-sloth bear encounters and attacks in Nepal's unprotected forests.



Population size, density, and ranging behaviour of a key leopard population in Nepal.



Coexistence of sympatric large carnivores: Spatio-temporal interactions between tigers and leopards in Parsa National Park, Nepal.

Media coverage

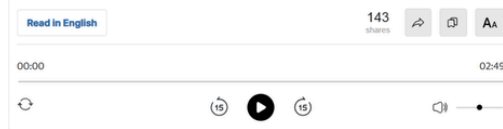
WILD CARE also made some headlines for its work in the fiscal year 081/82, the snapshot of which are presented below.

कान्तिपुर

कोशी

कोशी टप्पुमा मलाहा बिरालो संरक्षणका लागि पहल सुरु

जेठ ३१, २०८१ | अर्जुन सुवेदी



सुनसरी — कोशी टप्पु वन्यजन्तु आरक्षणमा पाइने दुर्लभ तथा संकटापन्न प्रजातिको मलाहा बिरालो (fishing cat) को संरक्षण गर्न समुदायमा सचेतना अभियान थालिएको छ ।

कछुवा संरक्षणको माग गर्दै हेटौंडामा

अमलाइयाखबर २०८१ जेठ १० गते २६:३१



१० जेठ, काठमाडौं । कछुवा संरक्षणको माग गर्दै हेटौंडामा चाली निकालिएको छ । वाइल्डलाइफ कन्जर्भेसन एण्ड रिसर्च एण्डभर (वाइल्ड केयर) नेपालले विश्व कछुवा दिवसको असर पारेर बिहीबार हेटौंडामा संरक्षण सचेतना चाली निकालेको हो ।

चालीमा सट्टागी विद्यार्थीहरूले कक्षा टिकर तथा पोस्टरकादरन लिएर संरक्षणको सन्देशमिति नारा

स्नातकका विद्यार्थीलाई बिरालो प्रजाति चिनाउन तालिम

परासी (बुटवल टुडे), १३ फागुन - बिरालो प्रजातिका वन्यजन्तुको अध्ययन, अनुसन्धान र संरक्षणबारे ज्ञान दिन प्राकृतिक विज्ञानका उच्च शिक्षा अध्ययनरत विद्यार्थीलाई सशक्तीकरण तालिम दिइएको छ ।

वाइल्ड केयरद्वारा नवलपुरको त्रिवेनीमा आयोजित ३ दिने तालिममा बिरालो प्रजातिका वन्यजन्तुको पहिचान, अध्ययन अनुसन्धान गर्ने विधि, प्रक्रियाबारे जानकारी दिइएको थियो । बिरालो प्रजातिका वन्यजन्तुको महत्व, समुदायले हेर्ने दृष्टिकोण र यी वन्यजन्तुका संरक्षण र चुनौतीबारे विस्तृत जानकारी दिइएको थियो । अनुसन्धान गर्ने विधि रेडियो कलर जडान र क्यामरा ट्रापिङबारे सैद्धान्तिक ज्ञान दिइएको थियो । सहभागीलाई बालिगो आश्रम वन क्षेत्रमा क्यामरा ट्रापिङ कसरी र कुन अवस्थामा गर्ने भनेर व्यवहारिक ज्ञान दिइएको थियो । तालिममा वन



विज्ञान, प्राणीशास्त्र र वातावरण शास्त्रमा स्नातक अध्ययनरत मुगुदेखि संखुवासभा १४ जिल्लाका १४ जना र स्थानीय सिटिजन साईन्टिस्ट ४ गरि १८ जना सहभागी थिए ।

नेपालमा बिरालो प्रजातिका १३ वटा वन्यजन्तु पाईन्छ । त्यसमा पाटेबाघ, हिउँचिचुवा र चितुवा दूला बिरालो प्रजातिमा पर्छन् । ध्वासे चितुवा, फू याकु बिरालो, ताश बिरालो, सुनौलो बिरालो र मलाहा बिरालो सानो बिरालो प्रजातिमा पर्छन् । त्यस्तै वन

बिरालो, चरीबाघ, एशियाली जंगली बिरालो, छिरीबिरे बिरालो र खियाथोप्ले बिरालोपनि साना बिरालो प्रजातिमा पर्छन् । यी वन्यजन्तुले पारिस्थितिकीय प्रणाली सन्तुलन राख्न निक्कै महत्वपूर्ण भूमिका खेल्न भएकाले संरक्षणका अभियान स्वरूप युवा विद्यार्थीलाई परिचालन गर्न तालिम गरिएको हो । सहभागीलाई बाघ विपेशज्ञ डा. बाबुराम लामिछाने, मलाहा बिरालो विपेशज्ञ रमा मिश्र, हिउँचिचुवा विपेशज्ञ तथा विश्व चर्चित रोलेक्स अवाई विजेता रिन्जिन

फुन्जोक लामा र वन्यजन्तु फोटोपत्रकार मनोज पौडेलले ज्ञान दिएका थिए । तालिम लिएकाले विद्यालय र समुदायमा गएर सोलस सर्भे गरि दुई सातासम्म सचेतना जगाई संरक्षणमैत्री पछि प्रमाणपत्र दिईने संस्थाका सविन अधिकारीले बताए । तालिम निक्कै प्रभावकारी हुँदा गाउँमा गएर संरक्षणका काम गर्न उत्साहित भएको मध्य पश्चिम विश्वविद्यालय, सुर्खेतमा विएस्सी तेस्रो वर्षमा अध्ययनरत ऐनबहादुर बुढाले बताए ।

Conservation materials



काठे भालु संरक्षण, चुरे समृद्धिको आधार

Sloth bear conservation for Chure prosperity !



वितरण र बासस्थान



- काठे भालु नेपाल, भारत र श्रीलंकामा पाईन्छ।
- नेपालको तराई र चुरे क्षेत्रका जंगल तथा घाँसे मैदानहरू (नवशामा देखाएको क्षेत्र)मा पाईन्छ।



संरक्षण अवस्था

नेपालमा संरक्षित
(रा. नि. तथा वन्यजन्तु संरक्षण ऐन)
IUCN Red List : **VU**
CITES: **Appendix I**

आयु	तौल	उचाइ	लम्बाई
२० - ४० वर्ष	५५-१४५ किलो	६०-९० सेमी	१.५ -२ मिटर

संरक्षण किन?



धमिरा र कमिलाको संख्यामा नियन्त्रण

फलफूलको बिउ बिजनको बिस्तार

जमिन खनेर उर्बेरा बढाई समग्र वनजंगलको विस्तारमा योगदान

आहारा



- धमिरा र कमिला यसको प्रमुख आहार हुन्
- यसले विभिन्न फलफूल र मह लगायतका खानेकुरा पनि खान्छ

संरक्षण चुनौति र खतरा



वासस्थानको विनाश

अवैध शिकार र तस्करी

मानव-भालु द्वन्द्व

आक्रमणबाट जोगिर्नु



एक्लै जंगल नजाऔं र जंगलमा हुँदापनि सँधै समूहमा रहौं

एकाविहानै, साँझ र राति जंगल नजाऔं

भालु हुनसक्ने स्थानमा चनाखो रहौं र आवाज दिऔं

हामी सबै मिलेर भालु र यसको बासस्थानको संरक्षण गरौं!

थप जानकारीको लागि : मनोज पोखरेल +977-9840362556 www.wildcare.org.np @wildcarenp



अति संकटापन्न ठोटरी (भुइँ कछुवा) संरक्षण गरौं !

Common name: Elongated Tortoise
Scientific name: *Indotestudo elongata*
Conservation status
IUCN Red List: Critically Endangered
CITES: Appendix II
Distribution
Global: South and Southeast Asia
Nepal: Terai and Shivalik region



बनौट र विशेषता



ठोटरीको शिरबाट खट्टामा जोडिएर बनेको हुन्छ । खट्टामा छेक्ने र चिप्लामा ठोटरीले चल्दछ र बास गर्छ ।

जर्बामा अग्लो

बासस्थान र आनीबानी

- धरम, घरेर हिउँ, विशेष गरी सालको वनमा बस्ने ।
- सबैभन्दा (जमली फलफूल, खस्यनि, स-सामा किरा, गहरीला आदि खाने) ।
- शरीरको तापक्रम कायम राख्न बाह्य स्रोतको आवश्यकता पर्ने ।
- जाडो याममा कम सक्रिय रही, निरुहार र सामो समयसम्म लुकेर बस्ने ।
- जमिनको उच्चो भागमा बाइल खनेर अन्डा (१-७ घटा) पार्ने । अन्डाहरू कडा खोल भएका, दृढ, मोलाकार हुन्छन् ।

ठोटरीको अद्भुत क्षमता

यो प्रजाति कतिपय ठुलो हुनसक्छ र केहि वर्षाई पनि जीवित रहिको अभिलेख नैरिएको छ ।

संरक्षण चुनौती

- बासस्थान विनाश, वन छुट्टेले र अन्य मानवीय गतिविधि ।
- घरमा पाल, मन्दिरमा चढाउन, विक्रीवितरण र व्यापारका लागि संकलन ।
- मासु, अन्डा र अन्व प्रयोगको लागि शिकार ।

सावधान !!

कुनै पनि प्रजातिको कछुवा संकलन गर्नु, पाल्न वा प्रजनन गराउनु, विक्री वितरण गर्नु वा सोको लागि जोसार्पसार गर्नु वा कुनै किसिमको हानी नोक्सानी पुगाउनु कानूनन अपराध हो । यद्यो गरेमा प्रचलित नियम अनुसार दूई वर्षदेखि १० वर्षसम्म कैद वा एक लाख रुपैयाँदेखि पाँच लाख रुपैयाँसम्म जरिवाना वा दुवै सजावको व्यवस्था छ ।



"Save Wetlands, Save Fishing Cat!" मलाहा बिरालो संरक्षण गरौं !



Scientific name: *Panthera tigris bleekeri*
Conservation Status
IUCN Redlist: Vulnerable
CITES: Appendix I
Distribution
Global: South and south east Asia
Nepal: <300m in Terai & Chure
Habitat: Tropical wetlands and grasslands
Food: Primarily piscivores; also eats rodents, reptiles, amphibians, crickets, insects, mollusks
Size: 7-16 kg, length 57-78cm, height 38-78
Breeding season: January to February
Gestation: 63 - 70 days
Litter size: 1-4
Life span: 12 years

संरक्षण बाटो

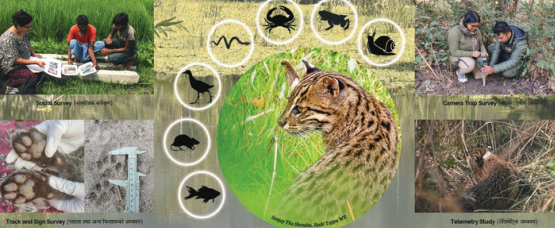
- शिकार, गैर, सँगैको अन्वेषण र ए र पीक कोसलको जाल
- सतम्पु संरक्षण, प्रसक्तो जसो जसो जसो जसो
- जसो जसो जसो जसो जसो जसो जसो जसो
- कुनै कुनै जसो जसो जसो जसो जसो जसो जसो जसो

संरक्षण बाटो

- शिकार गैर, सँगैको अन्वेषण र ए र पीक कोसलको जाल
- सतम्पु संरक्षण, प्रसक्तो जसो जसो जसो जसो
- जसो जसो जसो जसो जसो जसो जसो जसो
- कुनै कुनै जसो जसो जसो जसो जसो जसो जसो जसो

संरक्षण बाटो

- शिकार गैर, सँगैको अन्वेषण र ए र पीक कोसलको जाल
- सतम्पु संरक्षण, प्रसक्तो जसो जसो जसो जसो
- जसो जसो जसो जसो जसो जसो जसो जसो
- कुनै कुनै जसो जसो जसो जसो जसो जसो जसो जसो





Multimedia



Link: <https://www.youtube.com/watch?v=9qUByjxl8pA>



Link: <https://www.youtube.com/watch?v=cD7FIQg40CU>

Acknowledgements

We would like to extend our sincere gratitude and appreciation to our supporters and donors for their generosity. Your contributions have been invaluable in helping WILD CARE Nepal carry out its conservation, research, and community engagement initiatives over the past year.

Conservation partners

- The Rufford Foundation
- Bears in Mind
- Leo Foundation
- Big Cat Rescue
- Fishing Cat Conservation Alliance (FCCA)
- Foundation for the Conservation of Salamanders

In-country collaboration

- National Trust for Nature Conservation
- Turtle Rescue and Conservation Centre (TRCC)
- Mithila Wildlife Trust
- Green Youth Lumbini

Financial Summary

WILDLIFE CONSERVATION AND RESEARCH ENDEAVOUR NEPAL
MAHALAXMI-6, LALITPUR, NEPAL
Statement of Financial Position
As at 32nd Ashadh 2082

Figures in NPR

Particulars	Notes	As at 32nd Ashadh 2082	As at 31st Ashadh 2081
ASSETS			
Non - Current Assets			
Property, Plant and Equipment	4.1	1,028,303.02	-
Intangible Assets	4.2	-	-
Investment Property	4.3	-	-
Other Non-Current Assets	4.4	-	-
Total Non - Current Assets		1,028,303.02	-
Current Assets			
Inventories	4.5	-	-
Account Receivable	4.6	9,827.50	2,545.10
Cash and Cash Equivalents	4.7	2,890,287.15	2,071,152.62
Total Current Assets		2,900,114.65	2,073,697.72
TOTAL ASSETS		3,928,417.67	2,073,697.72
LIABILITIES & RESERVES			
Accumulated Reserves			
Unrestricted Funds/Accumulated Surplus	4.8	(385,927.08)	(242,473.64)
Designated Funds	4.9	-	-
Restricted Funds	4.10	2,953,545.51	2,186,617.36
Endowment Fund	4.11	-	-
Other Capital Reserves	4.12	-	-
Total Accumulated Reserves		2,567,618.43	1,944,143.72
Non - Current Liabilities			
Loans and Borrowings	4.13	-	-
Employee Benefit Liabilities	4.14	-	-
Deferred Revenue	4.15	860,166.01	-
Other Non-Current Liabilities	4.16	-	-
Total Non - Current Liabilities		860,166.01	-
Current Liabilities			
Accounts Payable	4.17	397,746.87	112,130.00
Loans and Borrowings	4.18	-	-
Provisions	4.19	-	-
Tax Liabilities	4.20	102,886.36	17,424.01
Total Current Liabilities		500,633.23	129,554.01
Total Liabilities		1,360,799.24	129,554.01
Total Liabilities and Reserves		3,928,417.67	2,073,697.72

The Notes on accounts form an integral part of the financial statements.

WILDLIFE CONSERVATION AND RESEARCH ENDEAVOUR NEPAL
MAHALAXMI-6, LALITPUR, NEPAL
STATEMENT OF INCOME & EXPENDITURE
For the Year Ended 32 Ashadh 2082

Figures in NPR

Particulars	Notes	FY 2081-82	FY 2080-81
INCOME			
Incoming Resources	4.21	3,356,138	331,100
Financial Income	4.22	30,024.32	16,967
Other Income	4.23	36,022.40	27,568
Total Income		3,422,185.15	375,635
EXPENDITURE			
Staff Cost/Expenses	4.24	-	40,000
Program Expenses	4.25	3,356,138	331,100
General Administrative Expenditure	4.26	461,949	247,009
Depreciation	4.1.1	38,510.21	-
Other Expenditure	4.27	-	-
Total Expenditure		3,856,597.86	618,109
Net surplus/(deficit) before Taxation		(434,413)	(242,474)
Income Tax Expenses	4.28	-	-
SURPLUS/(DEFICIT) FOR THE YEAR		(434,413)	(242,474)
APPROPRIATION OF SURPLUS FOR THE YEAR		-	-
REMAINING SURPLUS FOR THE YEAR		(434,413)	(242,474)

The Notes on accounts form an integral part of the financial statements.



WILDCARE

Wildlife Conservation and Research Endeavour Nepal

Shree Durbar Tole, Pulchowk, Lalitpur-03, Nepal

P.O. Box 139, District Post Office (3080203) Lalitpur, Nepal

Phone: +9779766383035

Email: info@wildcare.org.np

Web: <https://wildcare.org.np/>



@wildcarenp